



S E R I E S

5 9 1



INDUSTRY LEADING
COMMERCIAL & INDUSTRIAL SOLUTIONS

Heavy-Duty Thermacore® Door System

SERIES 591



Series 591 with passdoor and thermal glazing.

Standard Features At a Glance

Panel thickness	1 5/8" (41 mm)
R-value	14.86 (2.63 W/Msq)
U-value	.067 (.380 Msq/W)
Air infiltration:	
at 15 mph (24 kmph)	.08 cfm/ft ² (14.6 m ³ /hr/m ²)
at 25 mph (40 kmph)	.08 cfm/ft ² (14.6 m ³ /hr/m ²)
Thermal break	PVC
Exterior steel	.015" (.38 mm) galv.
Exterior surface	Ribbed, textured
Standard springs	10,000 cycle
Std. maximum width	35'2" (10.7 m)
Std. maximum height	24'1" (7.3 m)
Exterior color	White, tan, gray, Industrial Brown
Interior color	White
Limited warranty	10-year delamination 1-year door 3-year/20,000 cycle door and operator system (material and workmanship)

Options

- Thermal glazing
- Aluminum sash sections available up to 30'2" (depending on glass type and thickness)
- Four-section pass door
- High-usage components
- Optional: Kynar white, brown, beige
- Wind load options
- Electric operator
- Chain hoist
- Posi-Tension drums
- Safety bottom fixtures
- Bottom-sensing edge
- Flexible jamb, header seal
- Exhaust ports

An Exceptional Degree of Thermal Efficiency

When your project requires a door with an exceptional degree of thermal efficiency, the Thermacore® 591 is a proven performer. The Thermacore® steel-polyurethane-steel panel construction provides a thermal barrier that withstands extreme climatic conditions and the most demanding environmental requirements.

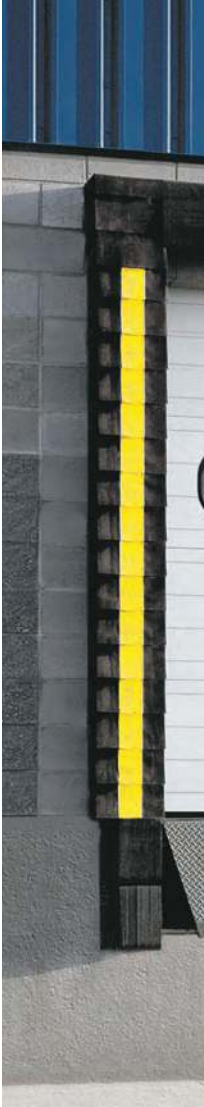
This 1 5/8" (41 mm) thick, heavy-duty door fits a wide range of opening sizes and the spectrum of applications — making it the best-selling door system in the Thermacore® line and one of the most-specified insulated sectional doors in the industry. Boasting an R-value of 14.86 (2.63 W/Msq), a U-value of .067 (.380 Msq/W), and one of the best air infiltration ratings, the Thermacore® 591 will meet or exceed almost any thermally efficient application requirement.

Engineered for High Thermal Efficiency.

The Thermacore® product line's unique manufacturing process provides a CFC-free, fully encapsulated, foamed-in place panel which maintains R-value performance year round – and year in and year out. Thermal breaks between internal and external skins, PVC thermal break and joint seal minimize air infiltration and provide one of the highest thermal efficiency ratings in the industry for specified applications.

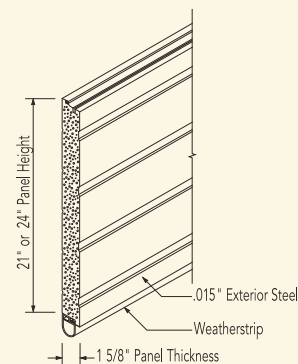
Strong, Lightweight, Attractive and Durable.

Thermacore® 591 doors feature roll-formed, hot-dipped galvanized steel exterior panels designed for exceptional strength and sound suppression capabilities. Wind load design available for usage in high-wind conditions. Two coats of baked-on, polyester paint on a ribbed, textured exterior surface provide a handsome finish that will last for years. Our industry-leading 10-year limited warranty against delamination means that we'll stand behind the quality of our doors at the outset and for the long haul.

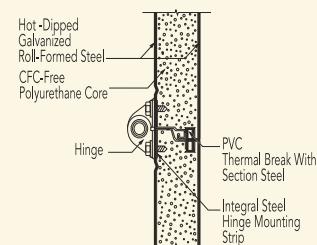




Thermal Performance. In Any Environment.



Overhead Door Corporation's line of Thermacore® steel-polyurethane-steel sandwich panel construction is lightweight, incredibly strong and exceptionally efficient – reflecting a premium level of thermal performance.



Installation and Service: Overhead Door Company of Twin Falls

Superior Field Serviceability.

Thermacore® has a special internal construction which allows hinges to be placed anywhere along the panel's length permitting customization on the job site — for fast and precise installation, repair or retrofit.

Built With the Best Technology in the Business.

The 591 is manufactured using Overhead Door Corporation's proprietary, computer-controlled fabrication process. This advanced technology ensures adherence to the industry's strictest product tolerances and results in an exceptionally well-built door for outstanding thermal efficiency and long-lasting performance.

Many Options, Better Solutions.

The Thermacore® 591 fits openings up to 35'2" (10.7 m) wide and 24'1" (7.3 m) high. A full line of electric operators ensures precise and trouble-free motor operation in a variety of mounting options (side, center or trolley). Available options include aluminum sash section, thermal glazing, pedestrian pass door, Knock & Lock® Breakaway door system, and jamb weatherstripping. Optional high-usage components expand the versatility of the 591 to high-cycle conditions, with torsion springs in 25k, 50k, 75k or 100k cycles, a solid-steel shaft to reduce fatigue and deflection, and a heavy-duty 3" (76 mm) steel track for added durability.

The Original, Innovative Choice for Unequaled Quality and Service

Overhead Door Corporation pioneered the upward-acting door industry, inventing the first upward-acting door in 1921 and the first electric door operator in 1926. Today, we continue to be the industry leader through the strength of our product innovation, superior craftsmanship and outstanding customer support, underscoring a legacy of quality, expertise and integrity. That's why design and construction professionals specify Overhead Door Corporation products more often than any other brand.

The Overhead Door Red Ribbon is a mark of quality that also reflects the pride we take in the people who support our products. Our family of over 400 Overhead Door Distributors across the country not only share our name and logo, but also our commitment to excellence. Your Overhead Door Distributor will work with you in a consultative role to ensure that product selections achieve your design and application requirements — in addition to offering expert installation, professional field service and ongoing maintenance. From project design and manufacturing to installation and service, the Overhead Door Red Ribbon is your guarantee of genuine quality and turnkey service excellence.

Together with our distributors, we offer comprehensive technical information and resource materials to support your project, including:

- Architectural Design Manual – a comprehensive guide to selecting, specifying and detailing all commercial and industrial Overhead Door products can be found at www.OverheadDoor.com/ADM/base.html
- Operation & Maintenance Manual – detailed product information, customized for your project, to ensure reliable, long-life door system operation
- Custom application and technical assistance through ordering plants' customer service and technical services respectively
- Visit our Architect's Corner at www.OverheadDoor.com



Advanced Rolling Steel Door
RapidSlat®



Thermacore® Sectional Doors



Rolling & Side Folding
Security Grilles & Closures



Rolling Service Doors



Commercial Operators

Today, Overhead Door Corporation – along with our Horton Automatics division, for automated pedestrian entrances – is recognized as the leading, single-source manufacturer of integrated door and operator systems for commercial, industrial and residential applications. With multiple manufacturing locations throughout the United States, a state-of-the-art TREQ (Testing, Reliability, Engineering, and Quality) Center for design and engineering, and a national network of authorized Overhead Door Distributors, our capabilities are leading-edge and our field service and technical support second to none. Built best and backed best, Overhead Door is the industry's leading choice for quality that shows and lasts.

To talk with the Overhead Door Distributor nearest you, call 1-800-929-DOOR.

Overhead Door Corporation

2501 S. State Hwy. 121 Bus., Suite 200

Lewisville, Texas 75067

1-800-929-DOOR

www.OverheadDoor.com



INDUSTRY LEADING
COMMERCIAL & INDUSTRIAL SOLUTIONS

The Overhead Door Corporation family of quality commercial and industrial products includes:



A part of Sanwa Holdings Corporation